

STEELBUILT CURTAINWALL INFINITY™ SYSTEM

Now you can design what you envision, as limits are a thing of the past. The SteelBuilt Curtainwall Infinity System can use as a back mullion almost any type of structural member, from stainless steel to glulam beams. This allows architects and designers to use larger areas of glass, smaller frame profiles and wider free-spans than is possible with traditional aluminum curtainwall. This flexibility in design and material allows curtainwalls to be incorporated into a nearly limitless range of building types, designs, and performance requirements. SteelBuilt Curtainwall Infinity System helps inspire a whole new world of creativity.

FEATURES

- Almost any type of structural member can be used for a back mullion—from stainless steel to glulam beams
- Offers all the advantage of steel: larger free spans, narrower sight lines and improved thermal performance
- Narrow sight line of 1-3/4" (45 mm) or 2-3/8" (60 mm)
- Variety of system depths
- Infill options up to 3"
- Stainless steel or anodized cover caps available
- Painted finishes in standard and custom choices
- SteelBuilt Curtainwall Infinity System is an outside glazed captured curtainwall
- Silicone compatible glazing materials for long-lasting seals
- Concealed fastener joinery creates smooth, monolithic appearance
- Shear block fabrication method
- Compatible with SteelBuilt Window & Door® Systems

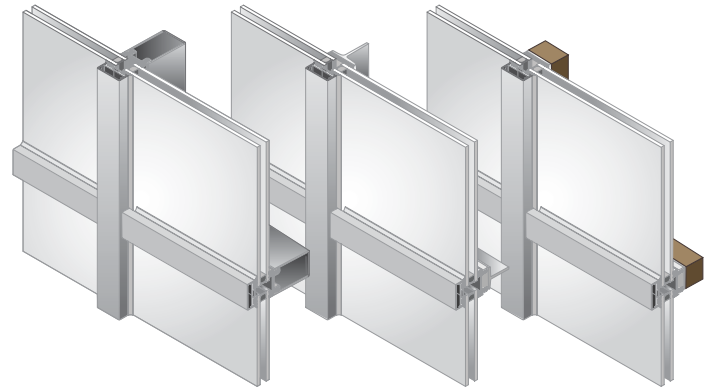
OPTIONAL FEATURES

- Stainless steel cover caps
- Custom aluminum cover caps available
- Steel reinforcing available

TESTING

Frame tests performed in accordance with:

AAMA 501.1	Dynamic Water Penetration
ASTM E283	Air Performance
ASTM E331	Static Water Penetration
ASTM E330	Structural Performance



THERMAL TRANSMITTANCE¹ (btu/hr + ft² + °F)

GLASS U-FACTOR ²	OVERALL U-FACTOR	
	STAINLESS STEEL COVER CAP	ALUMINUM COVER CAP
0.48	0.51	0.51
0.44	0.49	0.49
0.30	0.35	0.36
0.247	0.31	0.32
0.123	0.19	0.20

1. U-Factors are determined in accordance with NFRC 100. Approximate values only, actual values will vary depending on specific product configuration per project requirements.

2. Glass properties are based on center of glass values and are obtained from your glass supplier.

For more information, please contact TGP at 800.426.0279 or sales@tgpamerica.com

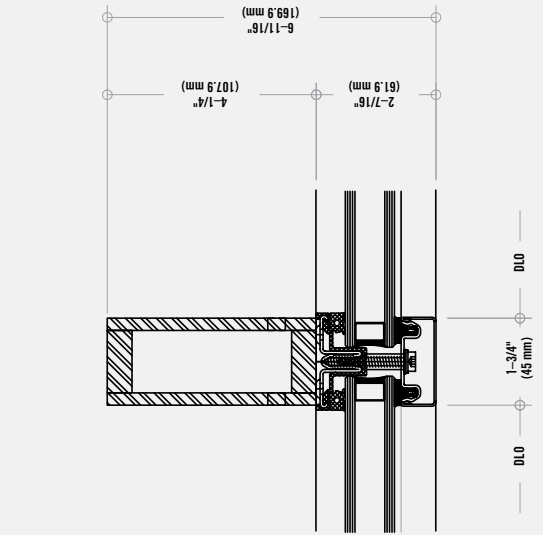
SYSTEM COMPARISON

STEELBUILT

CURTAINWALL INFINITY™ SYSTEM

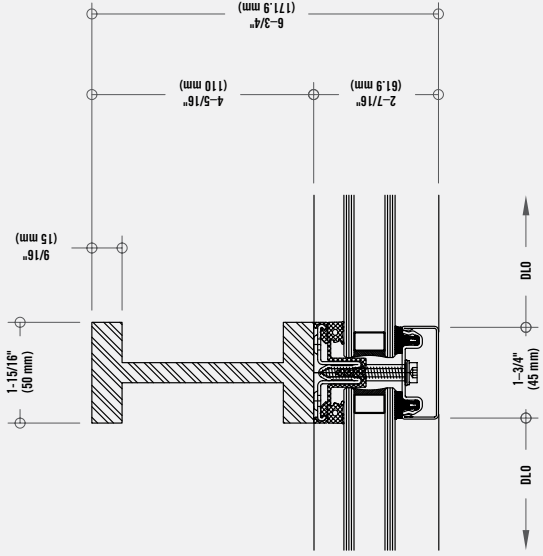
STEELBUILT CURTAINWALL INFINITY SYSTEM VS. TYPICAL ALUMINUM CURTAINWALL (BASED ON 20 FOOT FREE SPAN)		ADVANTAGE STEEL
NARROW FRAME WIDTH	1-3/4" (45 mm) face width vs. typical 2-1/2" face width of aluminum (SteelBuilt Curtainwall Infinity System also available in 2-3/8" (60 mm) width).	✓
NARROW FRAME DEPTH	Narrow back mullion using the SteelBuilt Curtainwall Infinity System vs. a required depth of nearly 8" for a typical aluminum curtainwall system. (SteelBuilt Curtainwall Infinity System is available with internal reinforcements to further reduce required frame depths).	✓
LARGE SPANS	20' spans with no additional reinforcements required.	✓
LARGE GLASS SIZES	Considerably larger glass sizes possible when comparing the same size frame profiles.	✓
DURABILITY	Strength of steel profiles ensure long-term resistance to denting, scratching or deterioration. SteelBuilt Curtainwall Infinity System can also include stainless steel cover caps or back mullions for aesthetics or increased durability.	✓

MULLION SECTION STEELBUILT CURTAINWALL INFINITY SYSTEM ADVANTAGE STEEL



CURTAINWALL ILLUSTRATION DESIGN CRITERIA

OVERALL HEIGHT: 20' (no intermediate anchor)
OVERALL WIDTH: 9'1-13/16"
GLASS PANEL SIZE: 36" x 79-7/16"
DESIGN PRESSURE: 25 PSF
DEFLECTION: L/240+1/4" L/175 < 13/6" L/240+1/4" > 13/6"



MULLION SECTION TYPICAL ALUMINUM CURTAINWALL SYSTEM

