

**STEELBUILT CURTAINWALL® SYSTEMS FROM TECHNICAL GLASS PRODUCTS**

SteelBuilt Curtainwall Systems give you numerous advantages over traditional aluminum curtainwall systems. These systems offer larger free spans, narrower sight lines and improved thermal performance. Utilized throughout Europe for many years, SteelBuilt Curtainwall Systems have now been tested to North American standards and are available for tremendous new design opportunities.

**FEATURES**

- Three times the wind load capacity of standard aluminum curtainwall
- Greater material strength for lower profile depths
- Superior thermal performance
- Significantly larger spans of glazing
- Reduced thermal expansion
- Water-tight joints with no visible weld bead
- Easy installation similar to typical pressure plate curtainwall
- Available in Stainless Steel
- Low maintenance system
- For interior or exterior use
- Finish painted at the factory to match desired color scheme
- Fabricated in the U.S.A.

**TESTING**

Frame tests performed in accordance with:

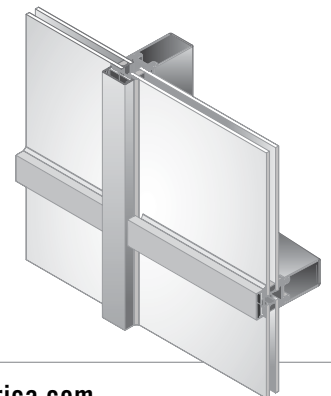
- |                   |                                  |
|-------------------|----------------------------------|
| <b>AAMA 501.1</b> | <b>Dynamic Water Penetration</b> |
| <b>ASTM E283</b>  | <b>Air Performance</b>           |
| <b>ASTM E331</b>  | <b>Static Water Penetration</b>  |
| <b>ASTM E330</b>  | <b>Structural Performance</b>    |

**THERMAL TRANSMITTANCE<sup>1</sup> (btu/hr + ft<sup>2</sup> + °F)**

GLASS U-FACTOR <sup>2</sup>	OVERALL U-FACTOR	
	STAINLESS STEEL COVER CAP	ALUMINUM COVER CAP
0.48	0.51	0.51
0.44	0.49	0.49
0.30	0.35	0.36
0.247	0.31	0.32
0.123	0.19	0.20

1. U-Factors are determined in accordance with NFRC 100. Approximate values only, actual values will vary depending on specific product configuration per project requirements.

2. Glass properties are based on center of glass values and are obtained from your glass supplier.

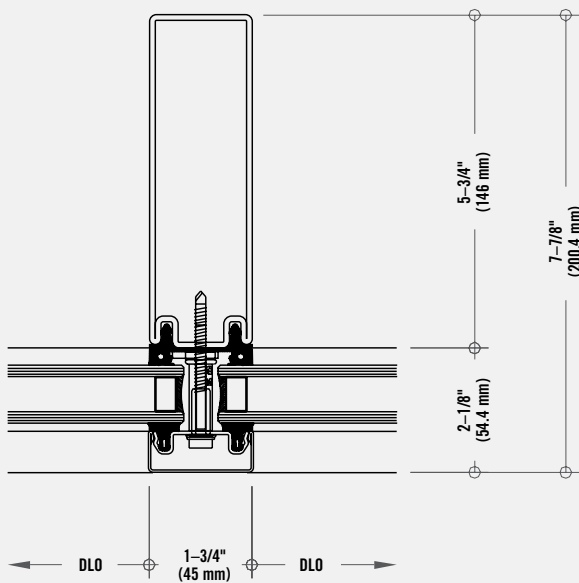


For more information, please contact TGP at 800.426.0279 or sales@tgpamerica.com

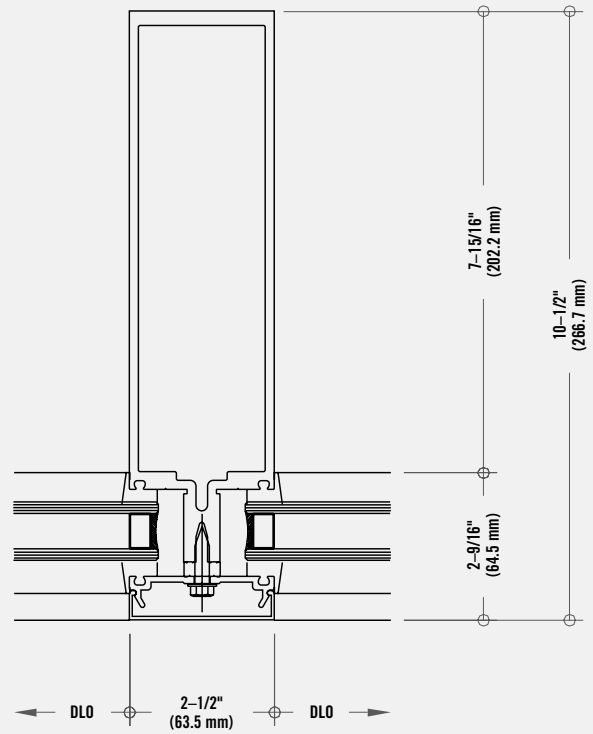
STEELBUILT VS. TYPICAL ALUMINUM CURTAINWALL (BASED ON 20 FOOT FREE SPAN)		ADVANTAGE STEEL
<b>NARROW FRAME WIDTH</b>	1-3/4" (45 mm) face width vs. typical 2-1/2" face width of aluminum (SteelBuilt Curtainwall also available in 2-3/8" (60 mm) width).	✓
<b>NARROW FRAME DEPTH</b>	Narrow 5-3/4" back mullion using the SteelBuilt Curtainwall System vs. a required depth of nearly 8 inches for a typical aluminum curtainwall system. (SteelBuilt Curtainwall Systems are available with internal reinforcements to further reduce required frame depths).	✓
<b>LARGE SPANS</b>	20 foot or larger spans with no additional reinforcements required.	✓
<b>LARGE GLASS SIZES</b>	Considerably larger glass sizes possible when comparing the same size frame profiles.	✓
<b>DURABILITY</b>	Strength of steel profiles ensure long-term resistance to denting, scratching or deterioration. SteelBuilt Curtainwall Systems can also include stainless steel cover caps for aesthetics or increased durability.	✓

**MULLION SECTION**  
STEELBUILT CURTAINWALL SYSTEM

**ADVANTAGE STEEL**



**MULLION SECTION**  
TYPICAL ALUMINUM CURTAINWALL SYSTEM



**CURTAINWALL ILLUSTRATION DESIGN CRITERIA**

- OVERALL HEIGHT:** 20' (no intermediate anchor)
- OVERALL WIDTH:** 9' 1-13/16"
- GLASS PANEL SIZE:** 36" x 79-7/16"
- DESIGN PRESSURE:** 25 PSF
- DEFLECTION:** L/240+1/4" L/175 < 13'6" L/240+1/4" > 13'6"