

## CHANNEL GLAZING SYSTEM WITH HIGH PERFORMANCE COLOR COATING

Pilkington Profilit™ is a translucent linear channel glazing system consisting of an extruded perimeter frame and self-supporting cast glass channels. Enhance your channel glass design with TGP ProColor durable, high performance color coating. A TGP exclusive in the U.S. and Canada, TGP ProColor does not require tempering and is bonded to the glass with remarkably high adhesion strength. It is available in a wide array of opaque or metallic colors with varying translucency, and in custom-blended colors.

### FEATURES - PILKINGTON PROFILIT

- May be used in interior or exterior applications
- Available in long channel lengths – up to 23 ft (7 m)
- Can be thermally toughened and heat soaked
- Can be opaque or translucent
- May be insulated with Lumira® aerogel for energy efficiency
- Can be utilized in curved walls
- Installs vertically or horizontally
- Aluminum perimeter frame provides additional structural strength
- Interior applications may be installed into wood jambs or millwork instead of TGP's aluminum framing
- Minimal maintenance
- Limited 10 year warranty

### FEATURES – TGP PROCOLOR

- High performance color coating is durable and colorfast
- Coating bonded with high adhesion strength is resistant to chipping and fading
- Available in a variety of opaque and metallic colors to match your desired color scheme (most RAL color system options are available)
- TGP ProColor coatings available on Standard (slight green) or OW (Low-Iron) glass options
- TGP ProColor coatings can be applied onto all available Pilkington Profilit textures, including Standard Cast, Macro, Slim Line, Wave and Clear
- May be single or dual glazed in a fully sealed Pilkington Profilit framing system
- May be provided with optional flood coat for added protection and opacity
- Limited 10 year warranty



Please visit [tgpamerica.com/design-options](http://tgpamerica.com/design-options) to view available Design Options.

## GENERAL CHARACTERISTICS OF PILKINGTON PROFILIT

APPROXIMATE FACE WIDTH	K22: 9.13 in (232 mm)	<b>K25 (STANDARD): 10.31 in (262 mm)</b>	K32: 13.03 in (331 mm)
APPROXIMATE FLANGE HEIGHT	2.36 in (60 mm)		
STANDARD THICKNESS	.28 in (7 mm)*		
MAXIMUM LENGTH	Up to 23 ft (varies according to windload and project requirements)		
WEIGHT / FT <sup>2</sup> OF CHANNEL SURFACE (including frame and components)	12 lb / ft <sup>2</sup> dual glazed 7 lb / ft <sup>2</sup> single glazed		
LIGHT TRANSMISSION	90% (uninsulated, varies with coating)		
U-VALUE (glass only)	.49 (uninsulated), .40 (Low-E uninsulated), .21 (Low-E with 16 mm Lumira aerogel insulation), .19 (Low-E with 25 mm Lumira aerogel insulation)		
SOLAR HEAT GAIN COEFFICIENT	.70 (uninsulated), .45 (Low-E uninsulated), .42 (Low-E with 16 mm Lumira aerogel insulation), .31 (Low-E with 25 mm Lumira aerogel insulation)		
STC RATING	42 dB (uninsulated), 44 dB (with 16 mm or 25 mm Lumira aerogel insulation)		

\*6 mm options are also available. Contact TGP for further information.

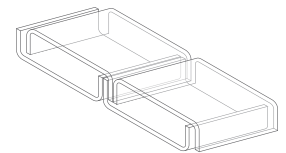
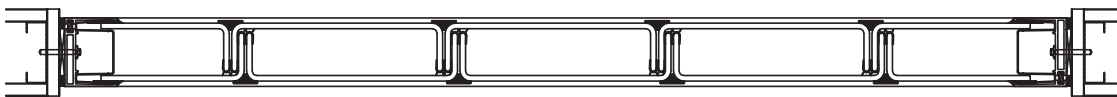
Pilkington Profilit with TGP ProColor coating is not a standard stocked item. Please check with TGP for availability.

## TESTING

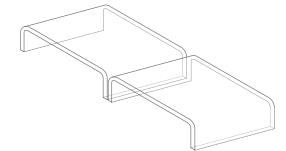
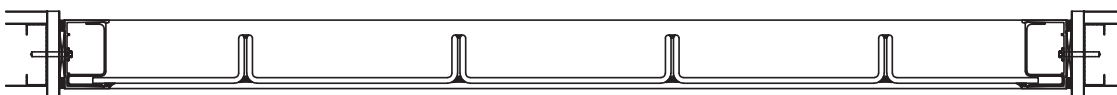
Pilkington Profilit has been tested to meet the following standards: AAMA 501.4, AAMA 101, AAMA 1801-97, AAMA/NWWDA 101/1, S.297, ASTM F 588-97, NFRC 100-97, ANSI Z97.1-1984, CPSC 16CFR 1201, Category II (with safety film). All testing carried out by Architectural Testing Inc., York, PA. Formal test results are available by contacting Technical Glass Products.

## STANDARD VERTICAL GLAZING

### DUAL GLAZING - THERMALLY BROKEN



### SINGLE GLAZING - NON THERMALLY BROKEN



## PERIMETER FRAMING SYSTEM

(DETAILS SHOWN ARE THERMALLY BROKEN)

