



ARCHITECTURAL
one source. many solutions.®

STEELBUILT CURTAINWALL® SYSTEMS



STEELBUILT CURTAINWALL® SYSTEMS FROM TECHNICAL GLASS PRODUCTS

SteelBuilt Curtainwall® Systems give you all the advantages of steel: larger free spans, narrower sight lines and improved thermal performance over traditional aluminum systems. Utilized throughout Europe for many years, SteelBuilt Curtainwall Systems have been tested to North American standards for tremendous new design opportunities.

FEATURES

- Three times the wind load capacity of a standard aluminum curtain wall
- Three times the modulus of elasticity of aluminum, allowing for smaller profiles
- Greater material strength than aluminum
- Superior thermal performance and reduced thermal expansion than aluminum
- Significantly larger spans of glazing than traditional aluminum systems
- Water-tight curtain wall framing joints with no visible weld bead
- Easy installation similar to typical pressure plate curtain wall
- Low maintenance system
- For interior or exterior use
- Finish painted at the factory to match desired color scheme
- Fabricated in the U.S.A.

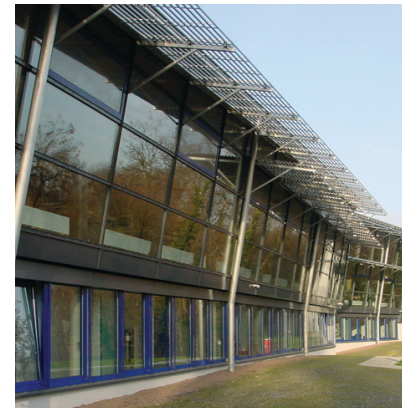
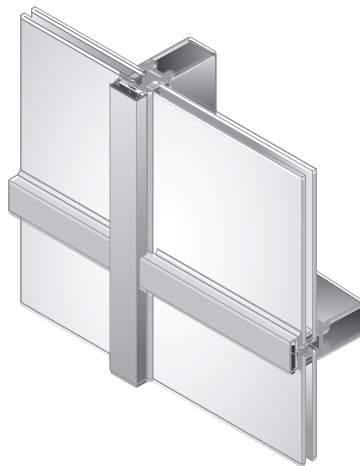
OPTIONAL FEATURES

- Structural silicone is available in 2- or 4-sided applications for a smooth monolithic appearance (see SteelBuilt Curtainwall® SSG System data sheet)
- Stainless steel cover caps

TESTING

Frame tests performed in accordance with:

- | | |
|------------|---------------------------|
| AAMA 501.1 | Dynamic Water Penetration |
| ASTM E283 | Air Performance |
| ASTM E331 | Static Water Penetration |
| ASTM E330 | Structural Performance |



For more information, please contact TGP at 800.426.0279 or sales@tgpamerica.com



THERMAL TRANSMITTANCE¹ (btu/hr + ft² + °F)

GLASS U-FACTOR ²	OVERALL U-FACTOR	
	STAINLESS STEEL COVER CAP	ALUMINUM COVER CAP
0.48	0.51	0.51
0.44	0.49	0.49
0.30	0.35	0.36
0.247	0.31	0.32
0.123	0.19	0.20

1. U-Factors are determined in accordance with NFRC 100. Approximate values only, actual values will vary depending on specific product configuration per project requirements.

2. Glass properties are based on center of glass values and are obtained from your glass supplier.

STEELBUILT CURTAINWALL® VS. TYPICAL ALUMINUM CURTAIN WALL

Givens: Design Wind Load: 30 psf | Module/Vertical to Vertical Spacing: 5'-0" | Rectangular Verticals: Captured

	ALUMINUM CURTAIN WALL	STEELBUILT CURTAINWALL® SYSTEMS	STEELBUILT CURTAINWALL INFINITY™ SYSTEM
SPAN	12'-6"	14'-0"	21'-5"
FACE WIDTH	2-1/2"	2-3/8"	2-3/8"
MULLION DEPTH	5"	5-3/8"	5"
OVERALL SYSTEM DEPTH	7-1/2"	7-3/8"	7-1/2"
DURABILITY	Prone to denting, scratching and deterioration	Long term resistance to denting, scratching and deterioration	Long term resistance to denting, scratching and deterioration
MODULUS OF ELASTICITY	1/3 that of steel. Does not support large lites	3x greater than aluminum to support larger glass lites	3x greater than aluminum to support larger glass lites
ADVANTAGES/DISADVANTAGES	<ul style="list-style-type: none"> - Cannot support large glass lites without reinforcing - Not as durable as steel 	<ul style="list-style-type: none"> + Greater modulus of elasticity to support larger glass lites + Less reinforcement required (if any) + Durability 	<ul style="list-style-type: none"> + Greater modulus of elasticity to support larger glass lites + Less reinforcement required (if any) + Durability

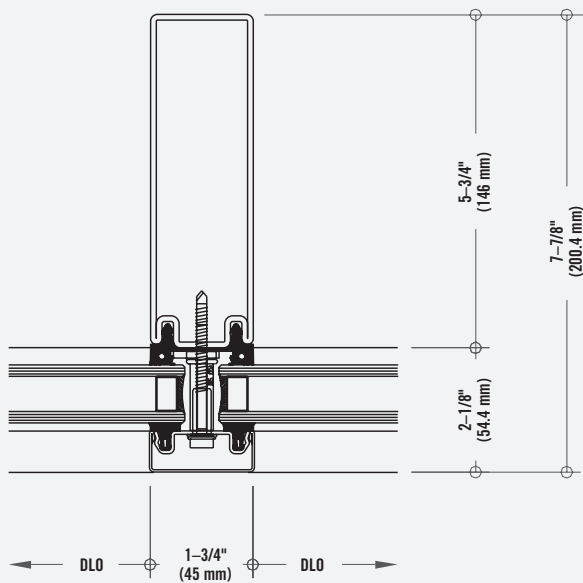


ARCHITECTURAL
one source. many solutions.®

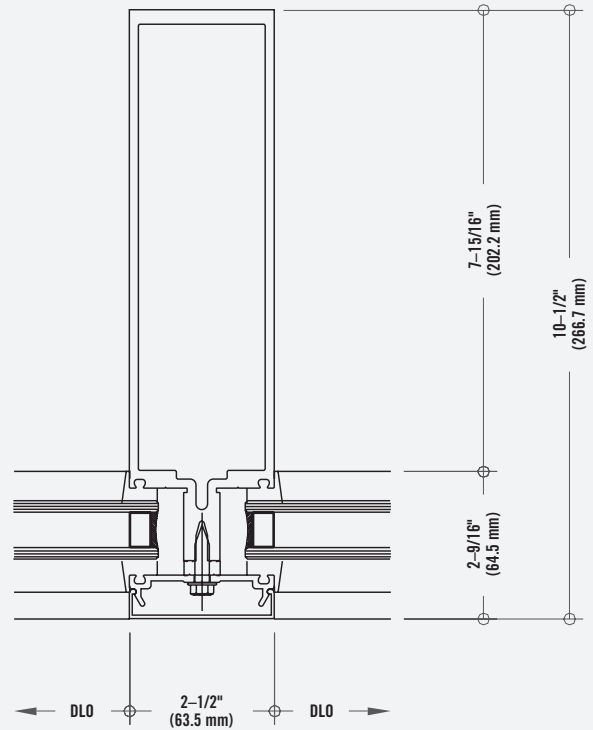
STEELBUILT CURTAINWALL® SYSTEMS

MULLION SECTION STEELBUILT CURTAINWALL SYSTEM

ADVANTAGE STEEL



MULLION SECTION TYPICAL ALUMINUM CURTAIN WALL SYSTEM



CURTAIN WALL ILLUSTRATION DESIGN CRITERIA

OVERALL HEIGHT:	20' (no intermediate anchor)
OVERALL WIDTH:	9' 1-13/16"
GLASS PANEL SIZE:	36" x 79-7/16"
DESIGN PRESSURE:	25 PSF
DEFLECTION:	L/240+1/4" L/175 < 13'6" L/240+1/4" > 13'6"