



ARCHITECTURAL
one source. many solutions.®

STEELBUILT CURTAINWALL INFINITY™ SYSTEM



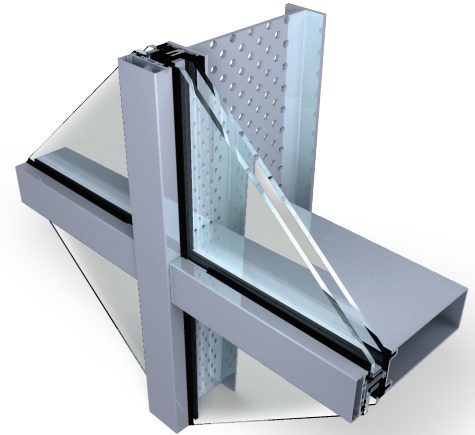
BIM 3D MODEL AVAILABLE

STEELBUILT CURTAINWALL INFINITY™ SYSTEM

The SteelBuilt Curtainwall Infinity™ System can use as a back mullion almost any type of custom steel member. This allows architects and designers to use larger areas of glass, smaller frame profiles and greater free spans than are possible with traditional aluminum curtain wall assemblies. The design flexibility allows curtain walls to be incorporated into a nearly limitless range of building types, designs, and performance requirements.

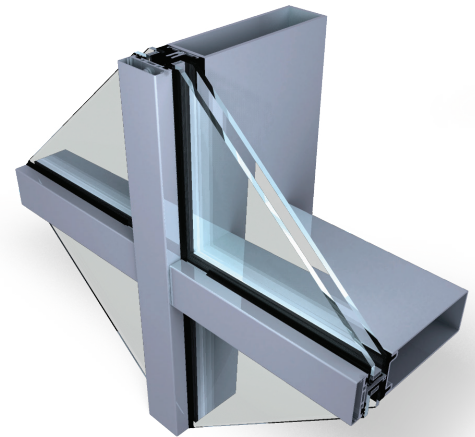
FEATURES

- Almost any type of custom steel member can be used for a back mullion - such as stainless steel, box, I-beams and T-shapes
- Offers all the advantage of steel: larger free spans, narrower sight lines and improved thermal performance
- Narrow sight line of 1-3/4" (45 mm) for interior use only, or 2-3/8" (60 mm)
- Variety of system depths
- Infill options up to 2"
- Painted finishes in standard and custom choices
- Silicone compatible glazing materials for long-lasting seals
- Shear block fabrication method
- Compatible with SteelBuilt Window & Door® Systems



OPTIONAL FEATURES

- Structural silicone is available in 2- or 4-sided applications for a smooth monolithic appearance (see SteelBuilt Curtainwall Infinity™ SSG System data sheet)
- Stainless steel cover caps
- Custom extruded aluminum cover caps



TESTING

Frame tests performed in accordance with:

- AAMA 501.1 Dynamic Water Penetration
- ASTM E283 Air Performance
- ASTM E331 Static Water Penetration
- ASTM E330 Structural Performance

For more information, please contact TGP at 800.426.0279 or sales@tgpamerica.com.



TECHNICAL GLASS PRODUCTS®
one source. many solutions.™

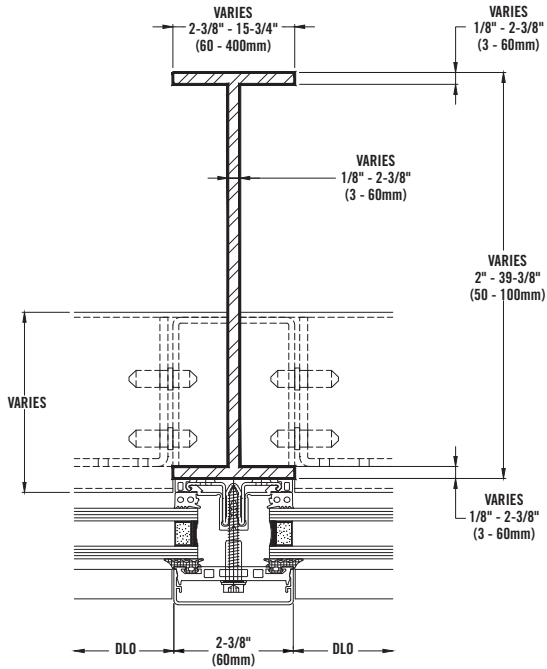
tgpamerica.com | 800.426.0279

STEELBUILT CURTAINWALL® VS. TYPICAL ALUMINUM CURTAIN WALL

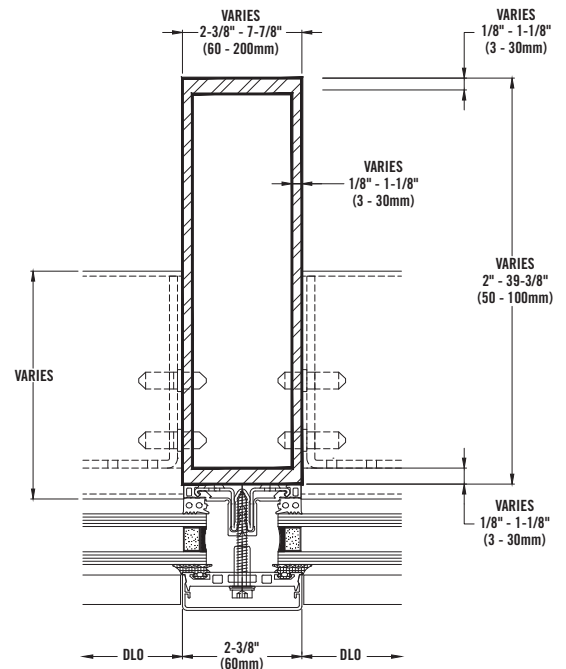
Givens: Design Wind Load: 30 psf | Module/Vertical to Vertical Spacing: 5'-0" | Rectangular Verticals: Captured

	ALUMINUM CURTAIN WALL	STEELBUILT CURTAINWALL® SYSTEMS	STEELBUILT CURTAINWALL INFINITY™ SYSTEM
SPAN	12'-6"	14'-0"	21'-5"
FACE WIDTH	2-1/2"	2-3/8"	2-3/8"
MULLION DEPTH	5"	5-3/8"	5"
OVERALL SYSTEM DEPTH	7-1/2"	7-3/8"	7-1/2"
DURABILITY	Prone to denting, scratching and deterioration	Long term resistance to denting, scratching and deterioration	Long term resistance to denting, scratching and deterioration
MODULUS OF ELASTICITY	1/3 that of steel. Does not support large lites	3x greater than aluminum to support larger glass lites	3x greater than aluminum to support larger glass lites
ADVANTAGES/DISADVANTAGES	<ul style="list-style-type: none"> - Cannot support large glass lites without reinforcing - Not as durable as steel 	<ul style="list-style-type: none"> + Greater modulus of elasticity to support larger glass lites + Less reinforcement required (if any) + Durability 	<ul style="list-style-type: none"> + Greater modulus of elasticity to support larger glass lites + Less reinforcement required (if any) + Durability

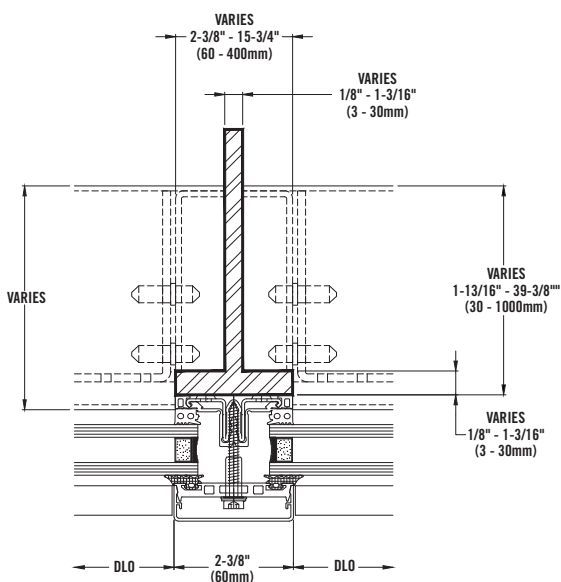
STEELBUILT CURTAINWALL INFINITY™ SYSTEM
I-BEAM OPTION



STEELBUILT CURTAINWALL INFINITY™ SYSTEM
TUBE PROFILE OPTION



STEELBUILT CURTAINWALL INFINITY™ SYSTEM
T-PROFILE OPTION



STEELBUILT CURTAINWALL INFINITY™ SYSTEM
TR-PROFILE OPTION

