

STEELBUILT CURTAINWALL® SSG SYSTEM
STEELBUILT CURTAINWALL INFINITY™ SSG SYSTEM

SteelBuilt Curtainwall SSG and SteelBuilt Curtainwall Infinity SSG steel framing systems provide the smooth, monolithic aesthetic of large glass sizes and free spans without front framing members. SteelBuilt Curtainwall Infinity SSG can use almost any type of custom steel back member-such as stainless steel, box, I-beams and T-shapes.

The system's glass and cassette components are assembled off site, utilizing fast curing structural silicone. Once installed, toggles hold the glass assembly to the steel framing. The end result is visually appealing façades with expansive free spans, minimal back mullions, large glass sizes, and an uninterrupted surface appearance.

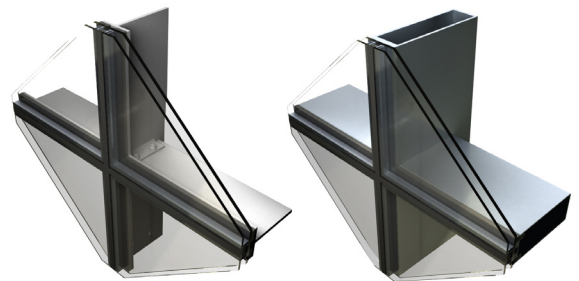
FEATURES

- Offers all the advantages of steel: larger free spans, larger glass sizes, and improved thermal performance
- Uninterrupted exterior sightlines for a smooth monolithic appearance
- Narrow sightlines: 2-3/4" (70 mm) SteelBuilt Curtainwall Infinity SSG System and 2-3/8" (60 mm) SteelBuilt Curtainwall SSG System
- Variety of system depths available
- Steel back mullions can be an infinite amount of shapes depending on design criteria
- Available in Series 304 stainless steel
- Infill glazing options ¼" to 2-1/2", depending on size of glazing panel, shape being used, mullion spacing, and design wind load pressures
- Structural silicone glazing promotes optimum sound and heat insulation (eliminates thermal breaks and unnecessary exterior exposed metal)
- Silicone compatible glazing materials for long-lasting seals
- Suitable for mid-rise, and low-rise structures, as feature entry or vestibule walls
- Shear block system for use in hollow vertical to horizontal connections
- Solid shapes (i.e. I-beams, T-profiles, etc.) used as horizontals may require exposed fasteners
- Compatible with SteelBuilt Window & Door® Systems
- Can be integrated into other systems
- Available in 2-sided and 4-sided systems; 2-sided systems have snap-on covers to conceal pressure plate screws (custom extruded aluminum caps available upon request)

TESTING

Frame tests performed in accordance with:

- ASTM E283** Air Performance
- ASTM E331** Static Water Penetration



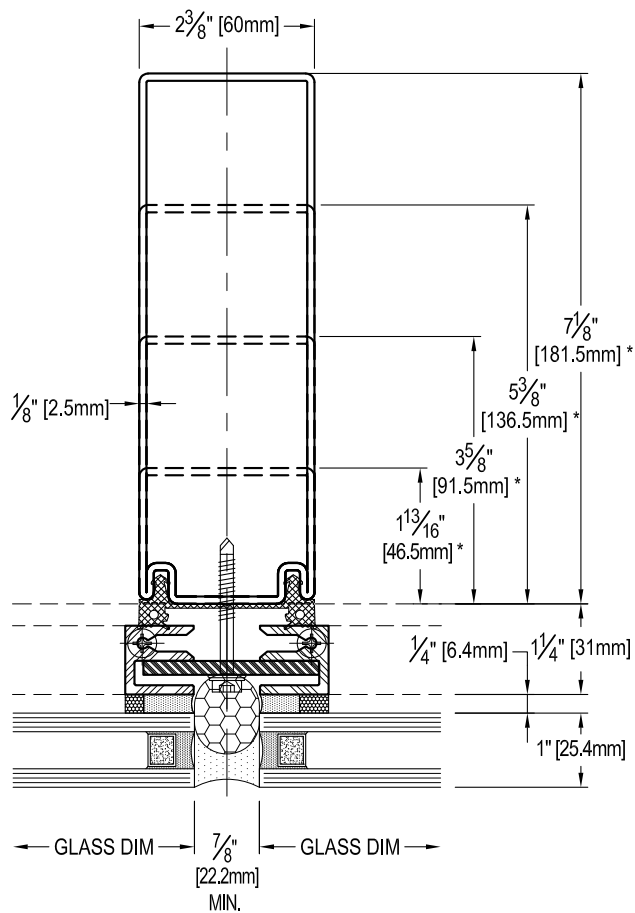
THERMAL TRANSMITTANCE (btu/hr + ft² + °F)

FRAMING	GLASS	VERTICAL / HORIZONTAL	MODELED U-VALUE*
SteelBuilt Curtainwall SSG Framing	1" IGU, both lites clear, 1/2" airspace, Low-E coating on #2 surface	Vertical: 2-3/8" x 7-1/8" rectangle Horizontal: 2-3/8" x 7-1/8" rectangle	0.39

*U-values vary by system framing, sizes, depths, glass sizes and construction. Contact TGP for THERM model analysis of your specific project.

For more information, please contact TGP at 800.426.0279 or sales@tgpamerica.com.

STEELBUILT CURTAINWALL SSG SYSTEM



STEELBUILT CURTAINWALL INFINITY SSG SYSTEM

