

TRANSLUCENT LINEAR CHANNEL GLAZING SYSTEM

The Pilkington Profilit™ translucent linear channel glazing system consists of unique, self-supporting cast glass channels and an extruded metal perimeter frame that allow for the passage of light without the loss of privacy. Pilkington Profilit can be used in interior or exterior applications. The “U-shaped” channels can be installed either vertically or horizontally.

The glass is available in a variety of colors and textures with varying translucency. Pilkington Profilit is energy efficient, provides excellent sound reduction, and it's one of the most cost-efficient glass wall systems available. It can be single or dual glazed for interior use or dual glazed for exterior applications. Technical Glass Products is the exclusive supplier of Lumira® aerogel insulation panels, which can be provided for greater energy efficiency.

FEATURES

- Available in channel lengths up to 23 ft (7 m)
- May be tempered or filmed to meet impact safety requirements
- Allows daylighting while maintaining privacy
- May be insulated with Lumira aerogel for energy efficiency
- Sound insulation (up to 42 db uninsulated, 44 db with Lumira aerogel insulation)
- Aluminum perimeter frame provides additional structural strength
- Can be utilized in curved walls
- Installs vertically or horizontally
- Interior applications may be installed into wood jambs or millwork instead of TGP's aluminum framing
- Minimal maintenance
- Proven performance – used in Europe for more than 30 years
- Most channels available with pinstripe wires

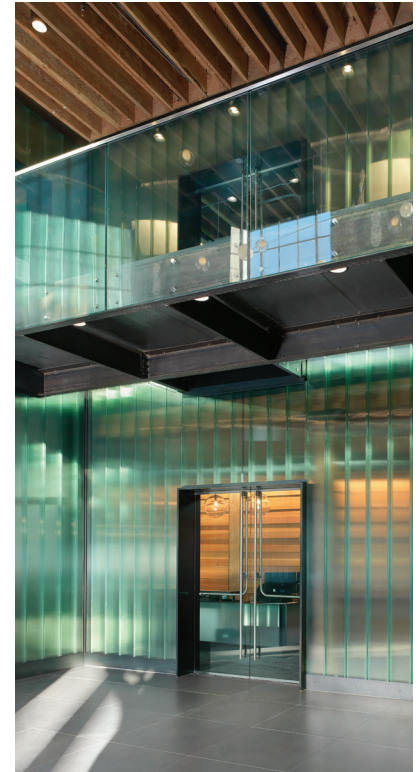
GENERAL CHARACTERISTICS

APPROXIMATE FACE WIDTH	K22: 9.13 in (232 mm) K25 (STANDARD): 10.31 in (262 mm) K32: 13.03 in (331 mm)
APPROXIMATE FLANGE HEIGHT	2.36 in (60 mm)
STANDARD THICKNESS	.28 in (7 mm)*
MAXIMUM LENGTH	Up to 23 ft (varies according to windload and project requirements)
WEIGHT/FT² OF CHANNEL SURFACE (INCLUDING FRAME AND COMPONENTS)	12 lb / ft² dual glazed 7 lb / ft² single glazed
LIGHT TRANSMISSION	70-75% (uninsulated, varies with coating)
U-VALUE (GLASS ONLY)	.49 (uninsulated), .40 (Low-E uninsulated), .21 (Low-E with 16 mm Lumira aerogel insulation), .19 (Low-E with 25 mm Lumira aerogel insulation)
SOLAR HEAT GAIN COEFFICIENT	.70 (uninsulated), .45 (Low-E uninsulated), .42 (Low-E with 16 mm Lumira aerogel insulation), .31 (Low-E with 25 mm Lumira aerogel insulation)
STC RATING	42 dB (uninsulated), 44 dB (with 16 mm or 25 mm Lumira aerogel insulation)

*6 mm options are also available. Contact TGP for further information.



BIM 3D Model



DESIGN OPTIONS

Surface Textures

All textures can be sandblasted unless they have a surface-applied specialty coating.

- **Standard:** lightly dimpled surface
- **Macro:** netted screen surface
- **Slim Line:** thin, linear grooves
- **Wave:** well defined ridge texture
- **Clear:** no visible texture

Glass Colors

- **Standard Cast:** Standard channel glass has an inherent slight green hue
- **Low Iron:** Pilkington Profilit™ OW (Low-Iron) is a low iron composition glass that creates a nearly colorless product with improved light transmission. Please see Pilkington Profilit OW (Low-Iron) fact sheet for more information.

Color Coatings/Sandblasted

All coatings can be applied onto all available textures.

- **Amethyst:** slight blue transparent coating
- **Opaque Enameled Frit:** a variety of opaque colored frits that are heat tempered to the glass
- **Opaque Color Coating:** a variety of high performance opaque colors that don't require tempering, most RAL color system options are available
- **Metallic Color Coating:** opaque custom-blended, high-performance metallic colors that don't require tempering
- **Sandblasted:** improves privacy while allowing light transmission; can be applied to all textures (unless they have a surface-applied specialty coating)

Functional Coating

- **Low-E:** improved u-values

LISTINGS/STANDARDS

Pilkington Profilit has been tested to meet the following standards.

AAMA 501.4	ASTM F 588-97	ANSI Z97.1-1984	CPSC 16CFR 1201*
AAMA 101	S.297		
AAMA 1801-97			
AAMA/NWWDA 101/1			

*Category II (with safety film)

All testing carried out by Architectural Testing Inc., York, PA. Formal test results are available by contacting Technical Glass Products.

SPECIFICATIONS

Complete 3-part CSI format specifications are available online at www.tgpamerica.com, or by calling 800.426.0279. Please contact Technical Glass Products for more information.

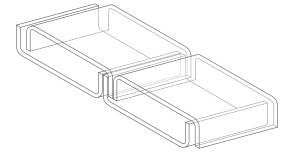
INSTALLATION

Pilkington Profilit should be installed in accordance with approved shop drawings – plumb, level, square and free from warp or twist while maintaining dimensional tolerances and alignment with surrounding construction.

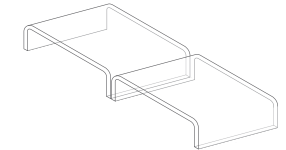
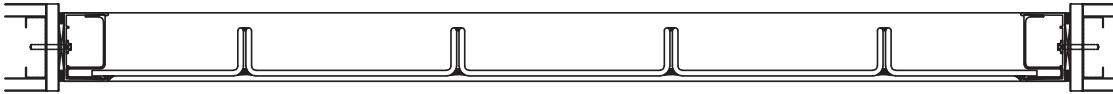
Erect framing, vinyl spacer and glass in accordance with manufacturer's printed installation instructions. Seal glass units continuously on both sides of glass between frame and glass and between linear glass units. Install perimeter joint sealant and backing materials between assemblies and adjacent construction.

STANDARD VERTICAL GLAZING

DUAL GLAZING - Thermally broken



SINGLE GLAZING - Non-thermally broken



PERIMETER FRAMING SYSTEM

(Details shown are thermally broken)

